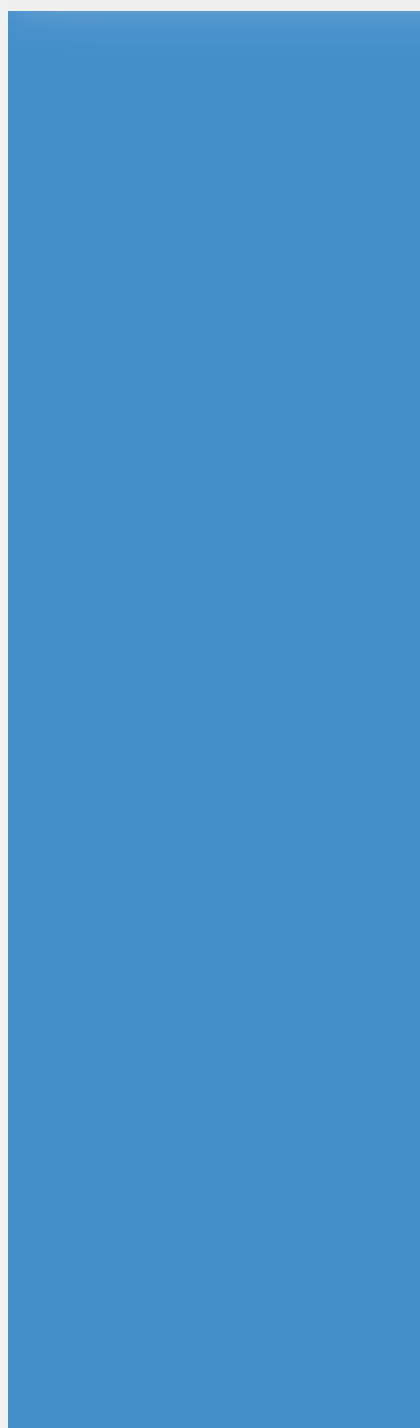




P E N S T O C K S & F L A P V A L V E S

ooo valves for life



ABOUT US



QUALITY



RELIABILITY



DURABILITY

Hakohav Valves started was founded in 1963 by two young visionary engineers who set their goal to become a leading player in the global valves industry.

What started over 50 years ago, in a small workshop has developed over the years to be a highly respected company with advanced modern manufacturing facilities and a worldwide reputation for having long lasting valves.

The combination of innovative technologies including machining, assembly lines, oven painting, special coating techniques and state of the art testing machinery, assures accuracy, durability and reliability and enables us to offer comprehensive solutions designed to withstand the most demanding applications.

Our skilled and dedicated engineers are here to find creative solutions for the most challenging applications; each one is an expert in their field and with accumulated knowledge of decades.

As a manufacturer, we are committed to the industry's most demanding standards allowing our clients to benefit from our experience and expertise.

The company's long lasting products are known for their reliability and durability and can be found in some of the biggest desalination plants in the world as well as in the chemical industry, water infrastructures and firefighting applications.

We strive for constant improvement of our products and services through great teamwork and constant market analysis.

Our success is built upon understanding our customers' needs, earning their trust and loyalty by finding innovating solutions.

As part of the growth strategy, the company relaunched its international brand, making **Kim Valves** its leading international identity as of 2015.

Our penstocks and flap valves excels in its durability and reliability.

Using HDPE - high density polyethylene (PE- HWU) and Stainless Steel combination enables our clients to save time and money.

QUALITY THROUGH EXPERIENCE-SINCE 1963

FEATURES & BENEFITS

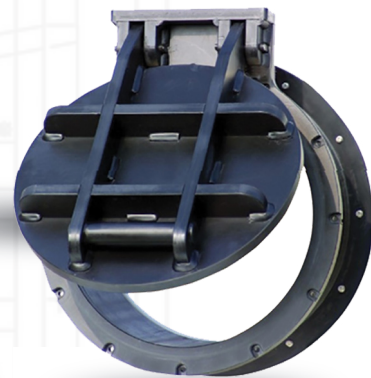
PENSTOCKS

- Low leakage rate - less than 1% of what is allowed in american standard AWWA C501
- No adjustments after installation



FLAP VALVES

- Low Opening Pressures, For Easy Opening



- Corrosion Resistance
- Good Chemical Resistance
- High UV Protection
- Temperature Range -50°C +70°C
- Light Weight
- Economic Design
- Minimal Maintenance
- Long Life
- No Coating Is Needed In Aggrsive Enviroment
- Low Headloss
- Easy Installation
- Low Operating Torques

Flexibility In Design.

The unique production system enables us to make special designs and provide tailor made solutions
Products can be adapted to a specific pressure or installation situation.

PENSTOCKS

Penstocks are mainly used for water management and flow control.

Our penstocks are designed for long life operation with minimum wear and are basically maintenance free.

The Stainless steel and HDPE combination result in a product that has high corrosion resistance, good chemical resistance, light weight and easy to install.

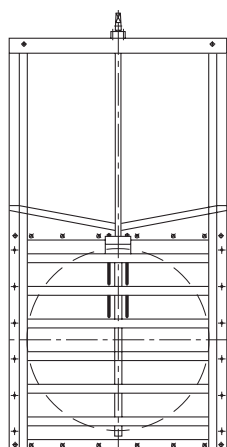
A special feature is an EPDM lip seal which allows the penstock to withstand high pressure on both sides.

Leak proof according to DIN 19569 part 4.

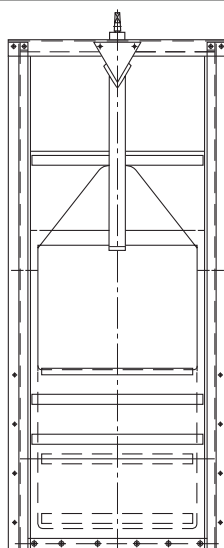
Name	Dimension	Pressure	Application
Penstock	150-2000 mm	5MWC on/off seating	End valve in sewer systems, Desalination plants, waste water treatment plants and other corrosion sensitive environments
Hand Valve	150-500 mm	Equal to height of hand valve	Small dimension hand gate for low pressure as an alternative for penstocks
Overflow Gate	Custom designed	Equal to door height	Regulates the upstream water level
Double Overflow Gate	Custom designed	Equal to door height	Regulates the upstream water level with the upper door and the additional option to lift the lower door to "flush" the channel
Sluice Gate	Custom designed	Equal to door height	Blocks the flow till door height, mostly in channel application
Float Valve	Custom designed		Automatically regulates the downstream water level. Single float design is for limited installation space
Stop Log	Custom designed	Equal to logs height	Regulates / blocks the upstream water level



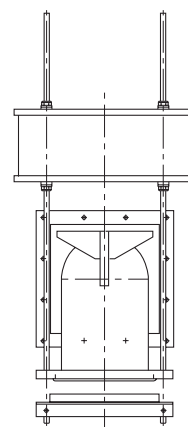
Penstock



Double Overflow Gate



Float Valve

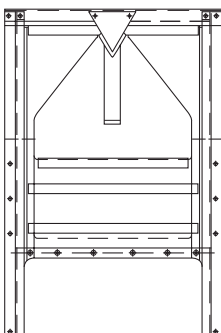


Materials

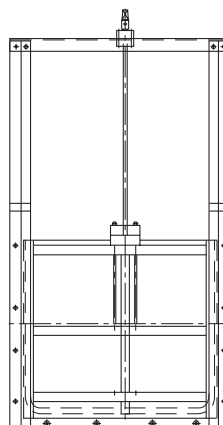
Description	Material
Cross Bar	SS 316, ST37 Coated (Nylon 11)/ Rilsan/ Halar (ECTFE)
Guides	SS 316, ST37 Coated (Nylon 11)/ Rilsan/ Halar (ECTFE)
Frame Plate	HDPE
Door	HDPE
Reinforcement Profiles	SS 316, ST37 Coated (Nylon 11)/ Rilsan/ Halar (ECTFE)
Bearing House	POM
Bearing	SS 316
Bearing Ring	Polymer
Spindle	SS 316
Nut	Bronze
Distance Block	HDPE
Sealing Door/ Frame Plate	EPDM
Sealing Penstock	Neoprene
Conical Socket	SS 316
End Stop	SS 316
Shaft	SS 316
Float	HDPE
Threaded Bar	SS 316



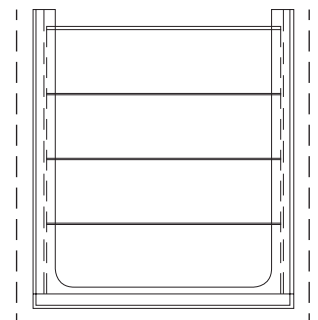
Over Flow Gate



Sluice Gate



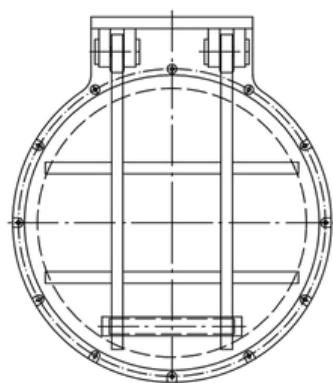
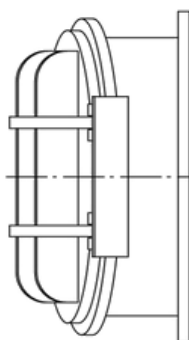
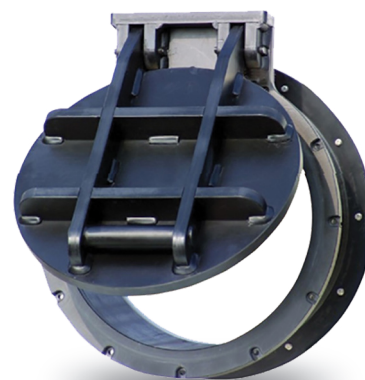
Stop Log



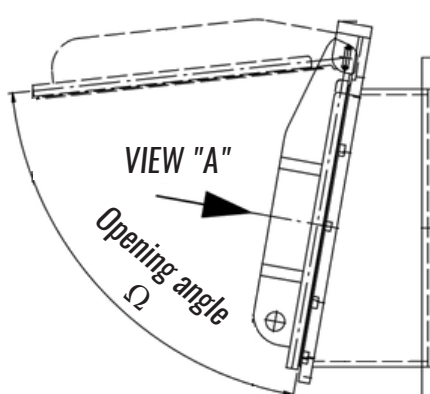
Flap valves are used to prevent backflow in times of emergency.
 HDPE is lighter than water- no need to facilitate opening of the door.
 Very low flow pressure column to open the valve.
 No corrosion means long life and less maintenance



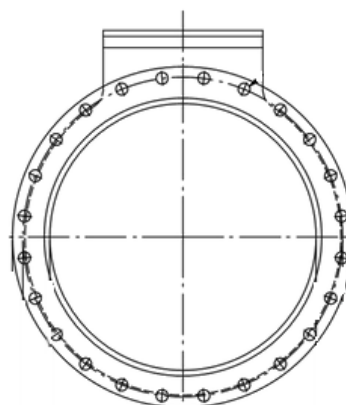
Type	Name	Dimension	Pressure	Application
Wall Mounting	HDPE Flap Valve	150-2000 mm	5MWC	Non-return flap valve suitable for emergency application/ flood protection.
Wall Mounting	HDPE Flap Valve (with 10° angle)	150-2000 mm	5MWC	Non-return flap valve suitable for permanent under water use with an anchor plate for wall mounting.
Pvc Connection	HDPE Flap Valve	160 - 630 mm	5MWC	Non-return flap valve suitable for permanent under water use, suitable for connection to PVC tube.
Connection To Concrete Or Steel Tube	HDPE Flap valve	300 - 1000 mm	5MWC	Non-return flap valve suitable for permanent under water use suitable to connect to concrete/ steel tubes.
Flange Connection	HDPE Flap Valve	150 - 1500 mm	5MWC	Non-return flap valve suitable for permanent under water use, with a flange connection.
Flap valve suitable for pressure pipe	HDPE Flap Valve	150-2000 mm	5MWC	Non-return flap valve suitable for permanent under water use, at the end of pressure pipe lines in pumping stations.
Liftable Flap Valve	HDPE Liftable flap valve		5MWC	Non-return flap valve suitable for permanent under water use mounted on a penstock frame so that the flap valve can be lifted



VIEW "A"
Front View



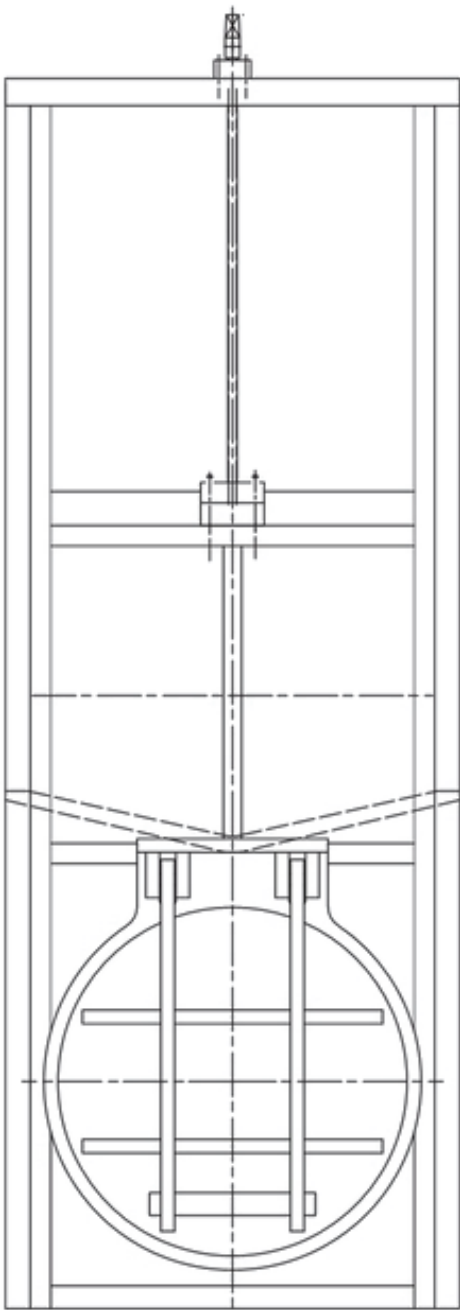
Side View



Rear View

Materials

Liftable flap valve



Description	Material
Frame Plate	HDPE
Valve Door	HDPE
Reinforcement Ribs	HDPE
Reinforcement Profiles	SS AISI 316
Hinge	HDPE
Hinge Pin	SS AISI 316
Hinge Cover	HDPE
Sealing	EPDM
Lifting Eye	SS A4
Ballast	HDPE (filled with steel)
Ballast	SS AISI 316
Sealing	Neoprene

SELECTED INSTALLATIONS

Penstocks by KIM VALVES at the Carlsbad desalination plant in San Diego, California, the largest desalination plant in the western hemisphere. Dozens of penstocks and hundreds of vulcanized butterfly valves were supplied to this ambitious project that eventually will supply more than 50 million gallons of fresh water daily.

KIM VALVES penstocks are designed to withstand highly corrosive seashore environment surrounding desalination plants using sophisticated materials including HDPE.

Delivering high quality, long-lasting products that have the best characteristics, for the best price made KIM VALVES the preferable



